

ENCORE3

The world's most versatile screen management system



BETTER - FASTER - STRONGER

Yes, we heard the 'we want more' call of all you live event AV professionals. Here's our answer. With Barco's Encore3, screen management just became increasingly versatile.

BETTER - FASTER - STRONGER

All boxed into one future-proof solution for expanded peace of mind.

The Barco **Encore3** image processing platform is nothing short of a game-changer giving unparalleled image quality, broader canvas space, expanded system resources by easy linking, and advanced transition between layers during runtime. High-quality processing with unrivaled flexibility - all boxed into one future-ready solution.

A powerful processor for every event



Designed to maximize your investment



State-of-the-art technology



Operational ease-of-use



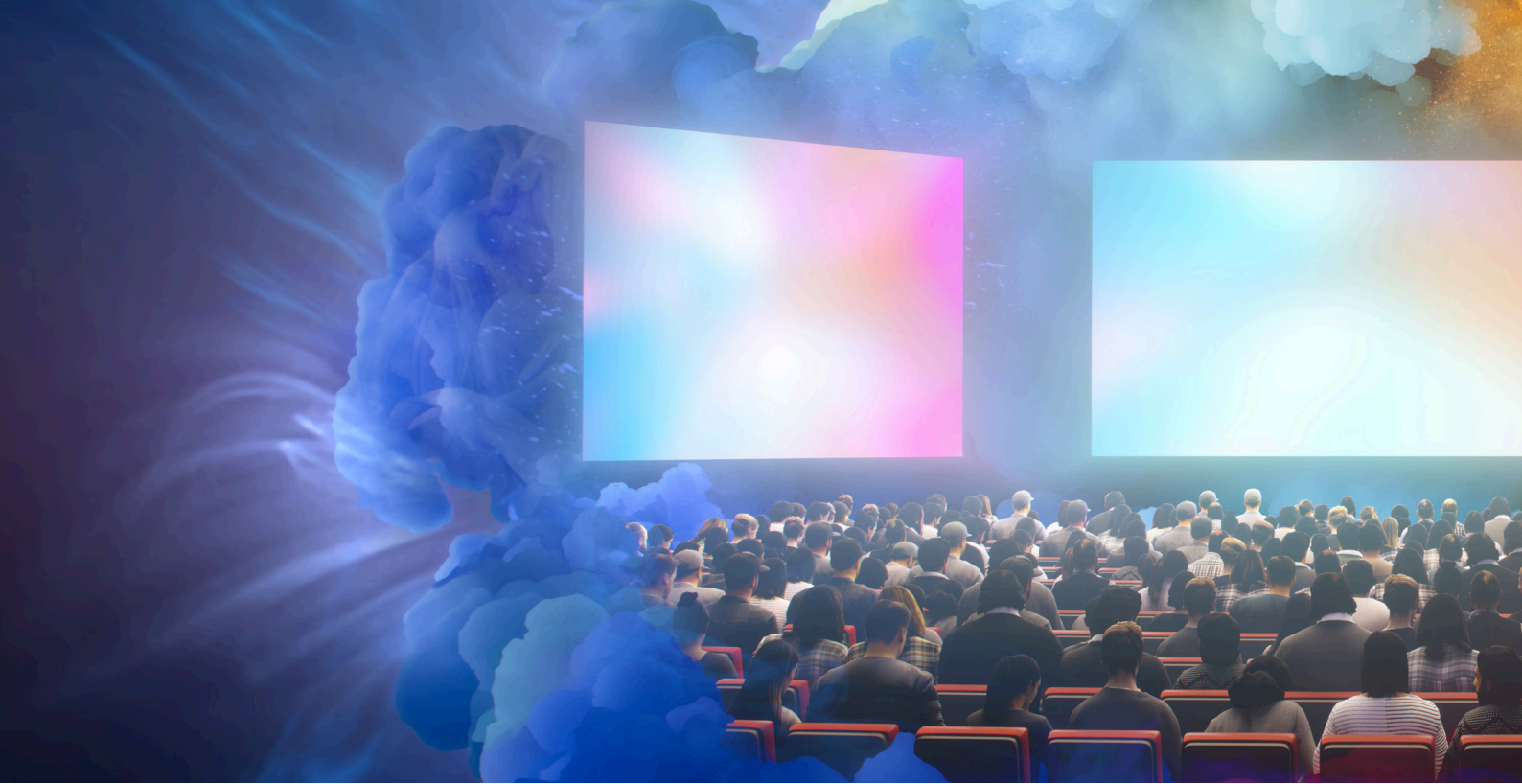
Fast and easy set-up





- Unleash the power of 4K60 outputs with boundless canvas.
- Unparalleled clarity with native 4K inputs, layers and outputs
- Enjoy straightforward and fast setup with intuitive assisted workflows.
- Store up to 2160MB (~60 4K60) of still images, supporting stills up to a staggering 160,000px in either horizontal or vertical dimensions.
- Seamlessly expand your inputs, outputs, and canvas by linking additional units.
- Benefit from standardized and widely available QSFP28 100G connectors for reliable link connectivity.
- Leverage 128x128 Dante I/O for embedding and de-embedding audio to and from baseband I/O, complete with internal audio channel mapping.*
- For precise timing, utilize onboard clocks and timers with up to 4 independent time channels that can be used as sources.*
- Enjoy peace of mind with a 3-year comprehensive standard warranty, expandable up to 5 years with Barco EssentialCare.

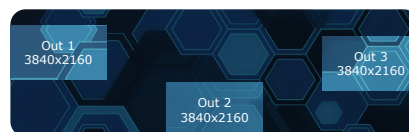
* Supported in a future release



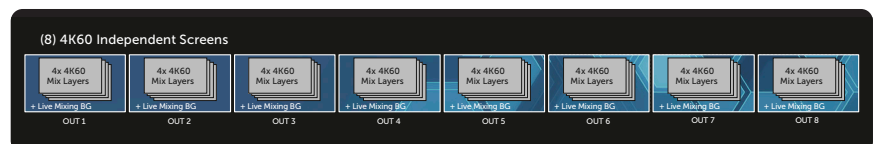
Expand your creative canvas beyond boundaries

Encore3 is an output driven system. Any unused space between outputs isn't utilizing resources. That's your boundless canvas. You can apply matte colors to layers and backgrounds for clean, branded visuals. And there's built-in 4K60 chroma and luma keying for seamless compositing.

The Barco Encore3 supports 8x 4K60 PGM outputs with a repositionable mixing live video background and always available 8x 4K60 layers per screen at 12 bit 4:4:4 processing. The Encore3 also supports our industry-leading, pixel-perfect Athena scaling technology with ultra-low latency. You can programme and rotate* the outputs to support a mixture of resolutions and layouts maximizing your system flexibility.



Use the 4K60 outputs independently or combine them any way you want for larger screens

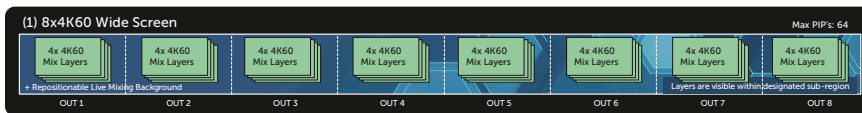




Flexible layer magic

Layers are always pre-assigned. Use them as mixers or split and recall them with presets. Regardless of your screen size, you always have at least 8 layers per screen. Layers can be used as split layers or region-bound output layers on demand with preset recall (scale up to 64x 4K60 layers on a single screen of 8x 4K60 outputs with boundless canvas). Lock layers in place to prevent accidental changes during live operation.

The **2x 4K60 Multiviewers** and their comprehensive overview of any input and output in the chassis allows for full situational awareness while creating the most impressive experiences. In addition, you can use the freeform Multiviewer as a source across all layers and outputs.



Layer expansion

Multiply your creative potential. Instead of being limited by the layer assignment of a single output, layer expansion lets you dramatically expand the number of layers available for complex compositions, effects, and real-time content.

You can internally combine (or „stack“) up to 4 physical 4K60 outputs to act as a single, ultra-powerful output. This stacked configuration allows you to drive up to 32 independent 4K60 layers on just one 4K60 canvas.



Fast and easy set-up

Streamline your event setup, eliminate unnecessary hassle, and unlock new levels of efficiency with the Encore3 screen management system. Thanks to its intuitive interface, assisted workflows and simulated programming, we reduce the manual actions in pre-configuration and resource management. With full situational awareness and integrated show control features, you can execute your vision with precision and confidence, every time.

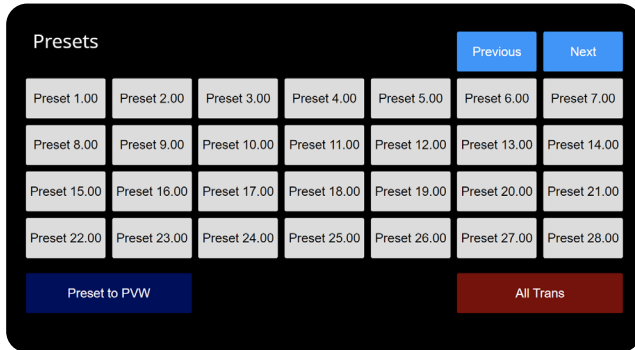
Show programming & show control features

- Familiar Event Master Toolset user interface reimagined for **speed and simplicity** - fully supported on Mac and Windows.
- Transfer show files between simulator and hardware with **bi-directional compatibility**.
- Design and refine your show in advance using the powerful **offline simulator** - available on Mac and Windows.
- Repurpose past programming with **smart show file management** and easy import of previously configured elements.
- Take control of your show flow with **enhanced cue management**.
- Tailor your control surface with custom **user keys** for faster access to layer parameters.
- **Integrated IP-based TSL 3.1 camera tally** keeps your production in sync and on cue.
- Extend system control across multiple operators for complex productions with **multi-operator support**.
- Program/recall desired looks on all or selected screens and AUXs with a single preset (up to 1000 presets).
- Adapt **relative presets** to different screen configurations and scenarios.
- Seamlessly switch between looks with **smooth transitions** that maintain visual continuity.
- Maximize your layer usage with **built-in conflict resolution** that keeps your show running smoothly.
- Achieve frame-perfect precision with Linear Time Code (LTC) integration for cue recall and show control.*
- Access your system confidently with a **password-protected HTTPs web browser**
- **Programmable web-widget panel** to cues and presets via an interface custom tailored to your workflow.
- Fully **compatible** with Gen2 I/O cards & EC30, EC50 & EC210* controllers.
- Easily **integrate with industry-standard control systems** like Crestron, Q-SYS and Companion for streamlined operations.*
- Unlock advanced control with a robust **external API**.

* Supported in a future release

Operational ease of use

The onboard **programmable web widget panel** and customizable preset configuration enables easy show control.



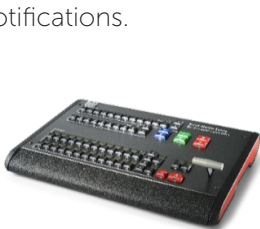
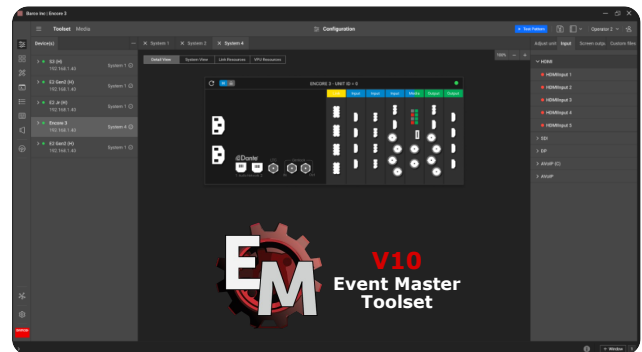
With integration of embedded audio and Dante*, the Encore3 continues the inclusion of digital **audio routing** in our image processing portfolio. Dante audio is supported both ways. Able to route audio from input to dante and from dante to outputs. It is your partner to deliver the most seamless event experience possible with high-quality video and audio.

Event Master Toolset

The Encore3 can be controlled with the refined yet familiar user interface of the Event Master Toolset. The toolset provides a step-by-step approach to configuring, programming presets, setting up the Multiviewers, and managing screens functions. And thanks to the external API it can also be integrated with other third- party control panels.

Working together with users in the field, we regularly upgrade our image processing firmware and software with a bunch of new features and improved functionalities that are highly desired by the community!

With a quick update you are ready for the future. If you want to stay informed about available future updates, make sure to subscribe to the myBarco support page of your presentation switcher, check your mailbox for notifications.



EC-30



EC-50



EC-210*

As an extension of the Event Master Toolset, the Event Controllers bring sources, presets, layers, cues and destination selection to your fingertips.

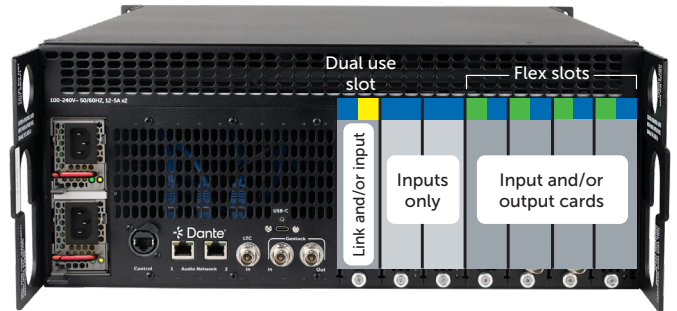
* Supported in a future release

Designed to maximize your investment

The Encore3 has four flex slots which allow for either Gen2 input or output cards supporting 4x4K60 each.

These flex slots enable future I/O cards to have concurrent inputs and outputs. In total, a single system supports up to seven slots total; Up to 7 input capable card slots and up to 4 output capable card slots, with each card handling up to 4x 4K@60p. Each output card includes 2x 4K60 scaled AUX outputs, plus 1x 4K60 scaled PIP per AUX with matte background support.

The flexible slot-based architecture and modular cards not only enhance customization but also safeguard your investments through the reuse of Gen2 cards and controllers already in your inventory and ensure that the system can evolve alongside the rapidly changing landscape of AV technology.



Compatible Gen2 cards:



4K60 Tri-combo input card



4K60 Tri-combo output card



H 2.0 quad input card



H 2.0 quad output card

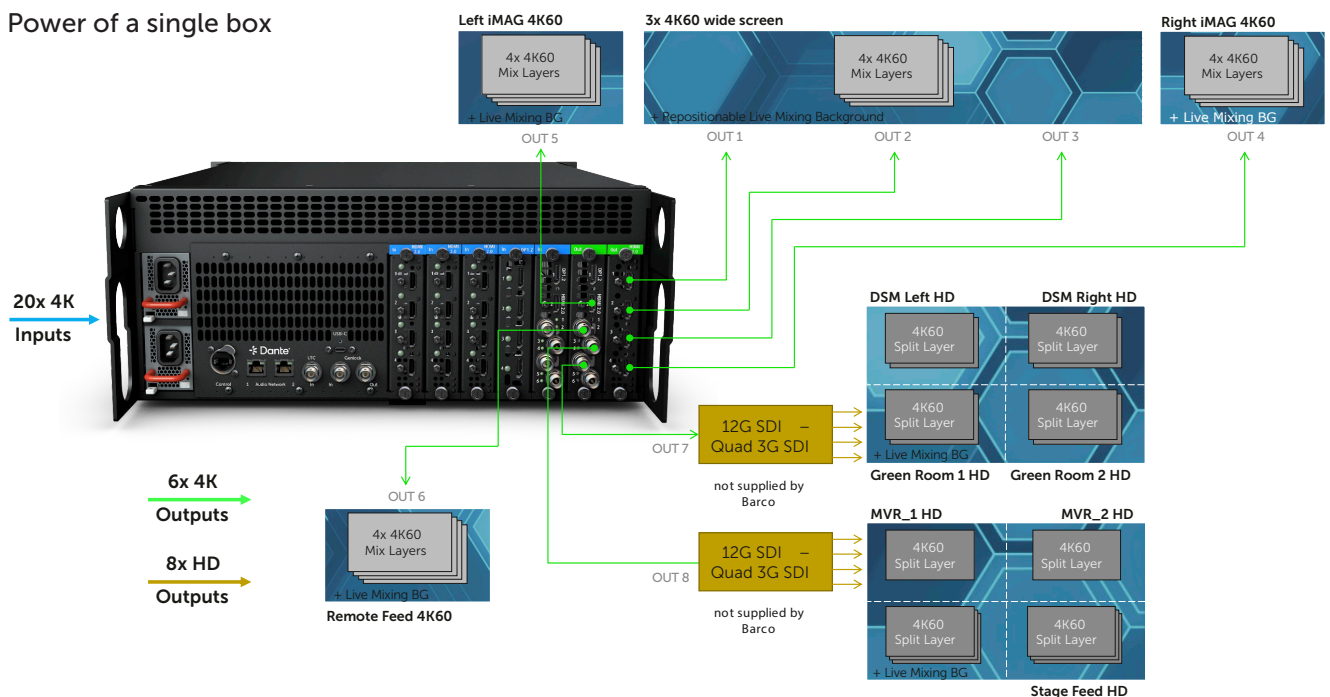


DisplayPort 1.2 quad input card



DisplayPort 1.2 quad output card

Power of a single box



Scalable expansion

In addition, the processor also ships with the ability to link two chassis to support bigger shows.

Easily expand your system and combine the power of two units through the new Quad 100G high speed expansion link card and widely available QSFP28 100G connectors to increase available inputs and outputs for larger displays and widescreen applications. Each link card offers 15x 4K60 sources to be shared each way.

Choose Single Mode Fiber for long distance or Direct Attach Copper cables for in-rack connectivity suited for your needs.



Build your own configuration

Event Master Encore3 will have a standard, finished and stocked configuration. As it's a scalable and modular system, it will also be available as a "Build To Order" system.

With a BTO approach and expandable I/O count, you have the flexibility to tailor the system to your exact requirements. Small shows or large-scale productions – the Encore3 has the strength and flexibility to handle it all and grow with your needs.

In addition, you can easily expand your system and combine the power of two units to increase available inputs and outputs for larger displays and widescreen applications.



Standard configuration



BTO configuration

Inputs	<ul style="list-style-type: none"> • 16x 4K@60p inputs • Up to 4x HD/3G/6G/12G SDI • Up to 9x HDMI2.0 (up to 4096x2160 @60 Hz) • Up to 5x DisplayPort 1.2 (up to 4096x2160 @60 Hz) 	Up to 7 input capable card slots, each input card supports up to 4x 4K@60p inputs
Outputs	<ul style="list-style-type: none"> • 8x 4K@60p outputs • Up to 4x HD/3G/6G/12G SDI • Up to 5x HDMI2.0 (up to 4096x2160 @60 Hz) • Up to 1x DisplayPort 1.2 (up to 4096x2160 @60 Hz) 	Up to 4 output capable card slots, each output card supports up to 4x 4K@60p outputs
Expansion	<ul style="list-style-type: none"> • 1x Quad 100G High Speed Expansion Link Card • includes 2x 100G QSFP28 2 meter DAC cables. 	Up to 1x Link card per chassis Expansion up-to 15*x 4K60 in & out per card

* Future release will support 16x 4K60

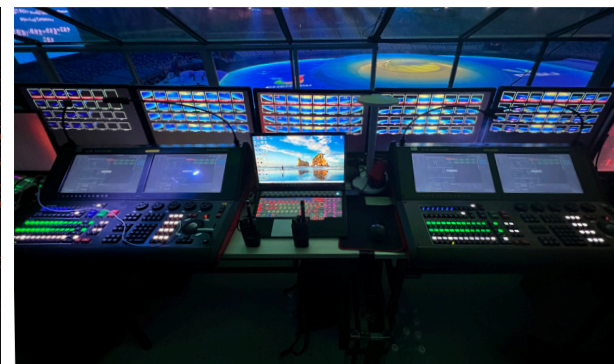
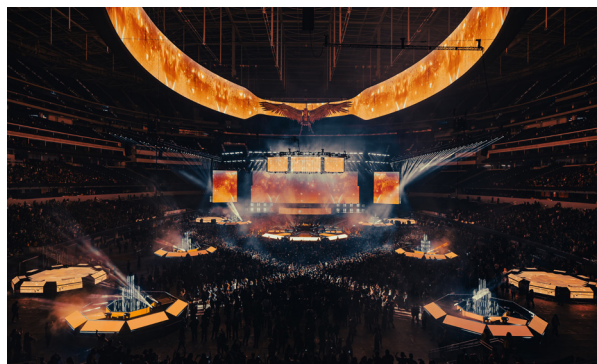
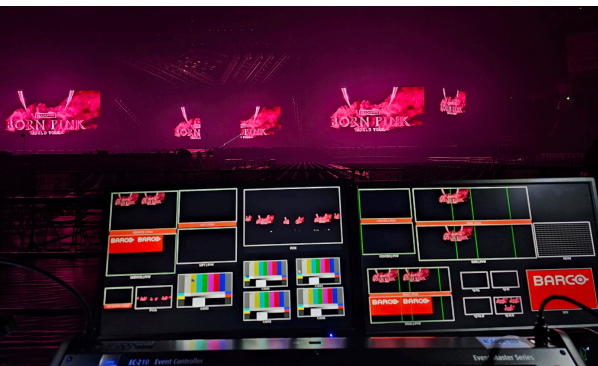
State-of-the-art technology

Investing in the Encore3 isn't just an investment in today—it's an investment in tomorrow. The system adopts a forward-looking design aimed at providing event professionals with a future-proof solution.

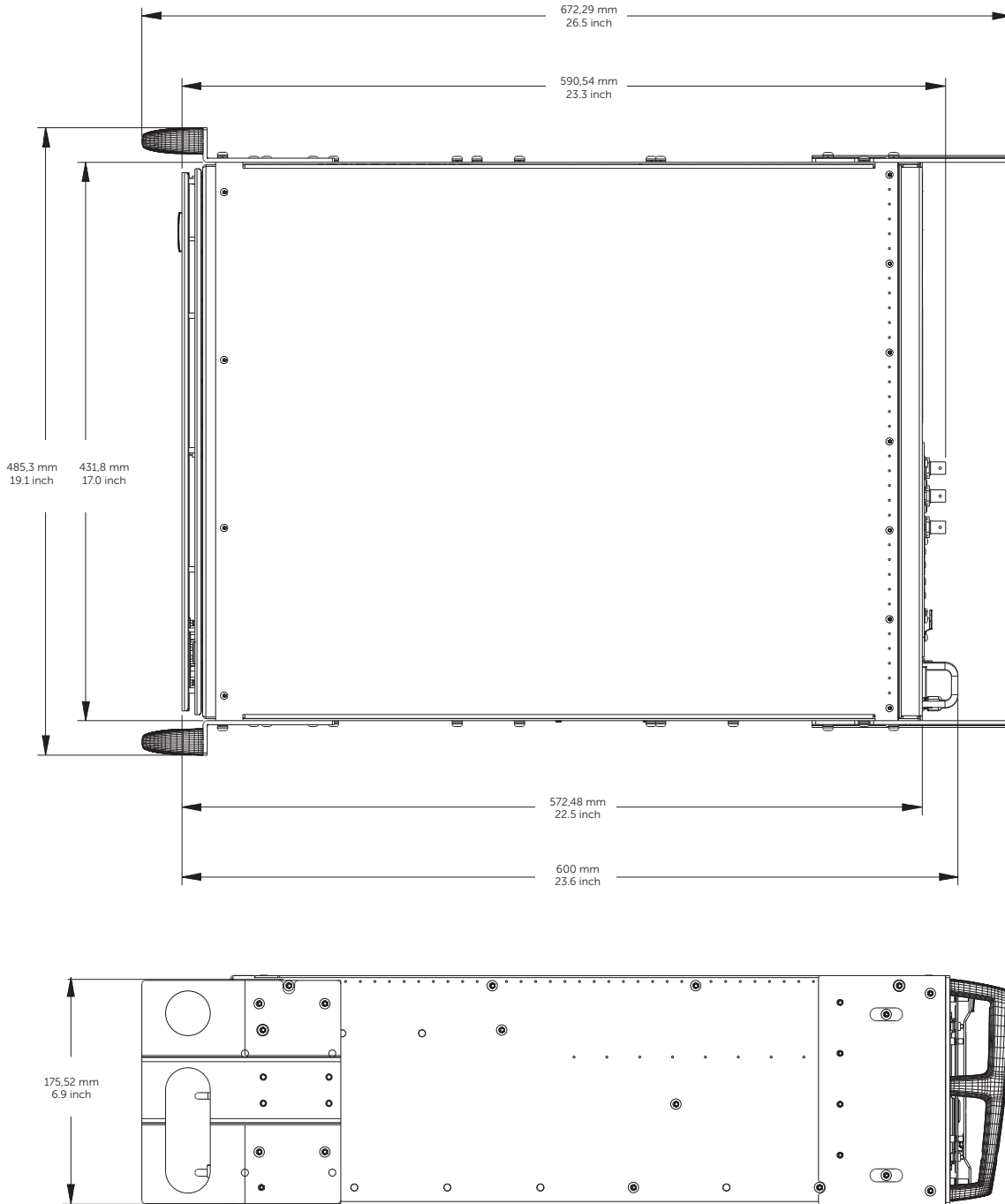
20 years of R&D experience allowed us to build hardware that is simple yet powerful.

The rugged Encore3 features a metal chassis that's able to withstand the challenging conditions of life on the road. Thanks to its modularity and the dual redundant power supplies, the Encore3 is extremely reliable and easy to service in the field.

Built with durability in mind the Encore3 is a powerhouse that's dedicated to delivering the strongest, most seamless event production possible.



Dimensions



© 2024 Barco NV. All rights reserved. Reproduction in whole or in part without written permission is prohibited. All brand names and product names are trademarks, registered trademarks or tradenames of their respective holders. Due to continued innovation, information and technical specifications are subject to change without prior notice. Please check www.barco.com for the latest specifications.

M00995-R02-0625-PB June 2025

www.barco.com

