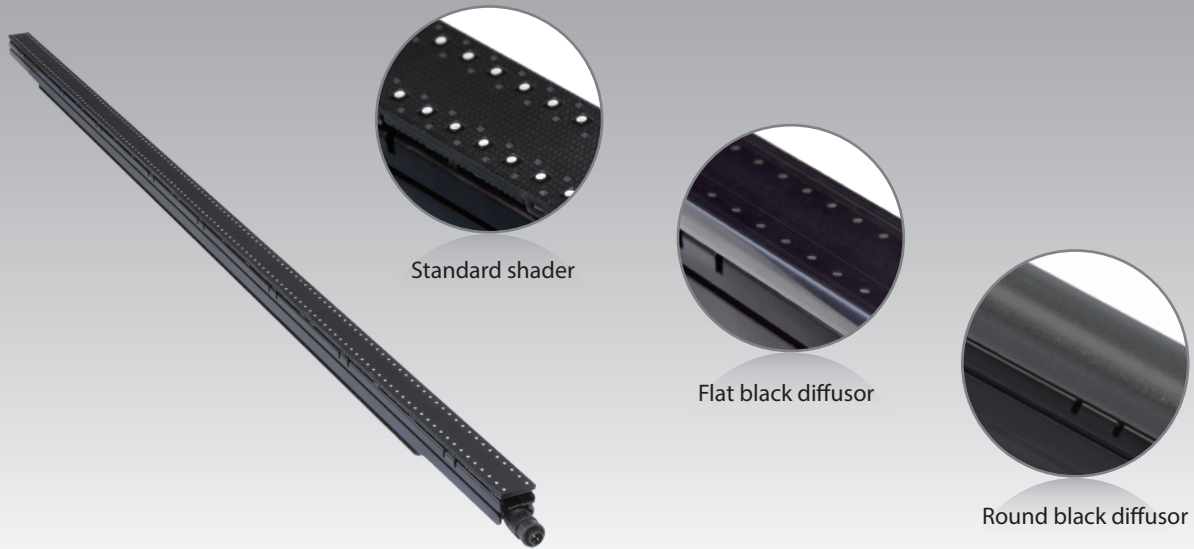


ROE Strip



■ Features

Variations of Light

3 different cover options allow for variable lighting effects.

Multiple Installations

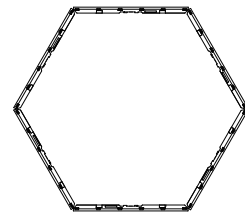
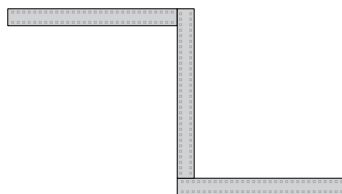
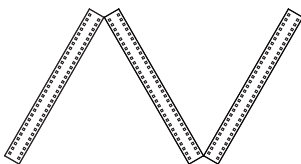
Their slim and lightweight structures are ideal for creative designs.

IP65

Indoor/Outdoor rating increases product versatility.

Modular Design


The three options for length of 300mm, 600mm, and 1200mm all use base 300mm modules for easy maintenance and modification.



■ Introduction

The ROE Strip is an indoor/outdoor linear LED element for creative stage design. The multiple cover options, ease of installation, and variable lengths make it ideal for meeting a creative designer's needs when standard LED screens would fail.

■ Specifications

ROE Strip	Standard shader	Flat black diffusor	Round black diffusor
Pixel Pitch/Horizontal	18.75mm	18.75mm	18.75mm
Pixel Pitch/Vertical	9.375mm	9.375mm	9.375mm
Pixel Density	5,690/sqm	5,690/sqm	5,690/sqm
Pixel / Tile	128×2	128×2	128×2
LED Configuration	White SMD 3-in-1	White SMD 3-in-1	White SMD 3-in-1
Max. Brightness	7,000 nits(Multicolor 2727)	2,100 nits(Multicolor 2727)	700 nits(Multicolor 2727)
Viewing Angle(Hor/Vert)	140°/140°	140°/140°	140°/140°
Transparency	Solid	Solid	Solid
Tile Dimension (W×H×D)	1,200mm×30mm×39mm 47.2"×1.2"×1.5"	1,200mm×30mm×41mm 47.2"×1.2"×1.6"	1,200mm×30mm×61mm 47.2"×1.2"×2.4"
Weight/Tile	990g	1,120g	1,190g
Frame Material	Magnesium Alloy	Magnesium Alloy	Magnesium Alloy
Gray Scale	10bit	10bit	10bit
Refresh Rate	6,000Hz	6,000Hz	6,000Hz
IP Rating(Front/Rear)	IP65	IP65	IP65
Scan	Static	Static	Static
Max Power/Tile	40W	40W	40W
Lifetime	≥50,000h	≥50,000h	≥50,000h
Processor	Brompton	Brompton	Brompton
Operating Temp/Humidity	-20°C to 45°C, 10~90%RH	-20°C to 45°C, 10~90%RH	-20°C to 45°C, 10~90%RH
Storage Temp/Humidity	-40°C to 60°C, 10~90%RH	-40°C to 60°C, 10~90%RH	-40°C to 60°C, 10~90%RH
Certifications			

■ Dimensions

